



MEGAPOLIS
Integrated Township
HINJAWADI

**LIVE
GREEN**



WELCOME TO
MEGAPOLIS

Your Home in Green Paradise



Actual Site Image.

It's almost too good to be true.

Green is the all pervading colour, as far as the eye can see.

The majestic Sahyadri mountains beckon on one side,
wide open expanses gladden the heart on the other.

This is Megapolis, and for a city dweller,
this is as close to paradise as one can get.

Spread across a vast, sprawling expanse,

Megapolis is an integrated township -
like a city connected to your home.

It is designed not just to make your lives pleasurable
and stress-free, but also for every visitor to fall in love with,
at first sight.

**COME HOME TO A GREEN TOWNSHIP,
A NATURE'S PLAYGROUND.**





Image for representation only.

WORK AND PLAY, THE STRESS-FREE WAY.



If you are a sport and fitness enthusiast, there is plenty at Megapolis to get the adrenalin going. Enjoy a game of tennis, head out for a run in the hills, go for a swim, shape up at the gym...all this at a hop and skip away from your home. With top IT companies within a few minutes from Megapolis, going to work comes without the stress of a long-drawn commute. It gets better. Premium malls, groceries, pharmacies... all that you'd expect for a hassle-free life, are all in close vicinity. For your child, a distinguished international school is at hand, so anxious parents can rest at ease.



Image for representation only.

Actual Site Image.



LIFE @ MEGAPOLIS IS A BREEZE.

The heart warming wide open spaces that characterize the Megapolis landscape are incorporated in the design feature too. Here, every floor is restricted to just 4 or 6 flats, affording you not just ample breathing space, but privacy too. Your daily dose of Vitamin D is well taken care of as well, with the design ensuring maximum sunlight and natural light to every flat.



Image for representation only.



Image for representation only.

PREMIUM LIVING HAS ITS PRIVILEGES.



Premium living bestows a world of amenities that make life an unending saga of conveniences at Megapolis. From an inviting swimming pool that drowns away all the cares of the world, to wi-fi facilities that allow you to shoot off that urgent mail, on to a Clubhouse that is perfect to indulge in some sport and leisure, you have an array of amenities at your command that make Life at Megapolis truly special.



Swimming Pool



Clubhouse consisting of gymnasium, meditation center and multi-purpose Hall.



Landscaped podium garden



Fire fighting system



Rain-water harvesting



Tri-mix concrete internal roads



Lifts with generator back-up





LIFE AT MEGAPOLIS: QUALITY TIME, FOR YOU AND FAMILY.



CLUB HOUSE

KIDS SWIMMING POOL

BASKETBALL COURT

CRICKET PITCHES



(Actual Images)

COMMON AMENITIES (Actual Images)



TENNIS ACADEMY



COMMON AMENITIES (Actual Images)

WALKWAY



KID'S PLAY AREA



COMMON AMENITIES (Actual Images)



PAWAR PUBLIC SCHOOL





Image for representation only.



THE BEAUTY WITHIN.

Stepping into a Megapolis home is as breath-taking an experience as it is warm-hearted. The interiors are a delightful melange of space, patterns, and subtle colours - all coming together to create an aura of distinctive sophistication. The delightful play of natural light and crisp, fresh mountain air wafting in from the sahyadris is an instant stress-reliever and is a signature aspect of Megapolis homes. The design aesthetics, and the mood are a testament to the intricate attention to detail that welcome you at every step.



Image for representation only.



Megapolis blends art with science in every little aspect at your premium homes. So, while you will discover that every little feature is perfectly placed to serve its purpose, it also adds to an enduring sense of aesthetic beauty and a reassuring sense of safety.

Image for representation only.

DELIGHT IN EVERY DETAIL.

Vitrified tiles for flooring in living, dining, kitchen and all bedrooms

Well designed toilets with premium brand chrome plated fittings and sanitary ware

Granite kitchen platform, stainless steel sink and tiles for dado up to 2'

Concealed wiring with premium brand modular electric switches

Aluminium sliding windows with mosquito net

Premium quality doors

Plastic emulsion paint for internal wall finish

Video Door Phone



Image for representation only.

CONNECTED TO THE GOOD LIFE.

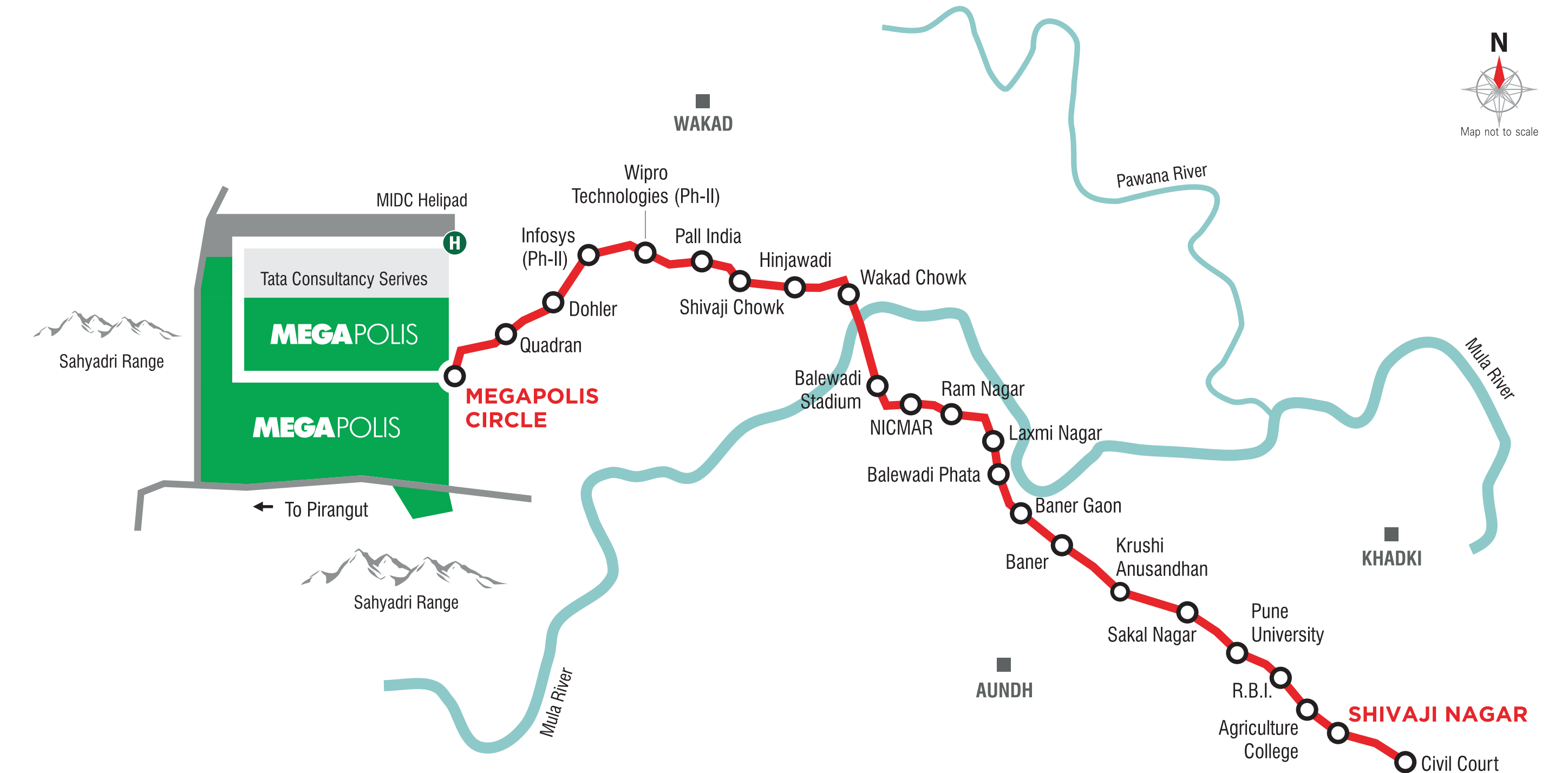
It wouldn't be a hyperbole to say that "All roads lead to Megapolis". This township gives you excellent connectivity to the city and all the services that you would deem central to your life. While today, you have ready access to all the amenities, it is set to get even better tomorrow, with the upcoming Metro station coming up at your very doorstep.

Invest in the Future.

The upcoming international airport in Navi Mumbai will not only cut the overall travel time to Megapolis, but will also make it a favoured address for the high fliers. The further development of Hinjawadi already underway, will add to the strategic importance of Megapolis, while greatly improving connectivity to the Mumbai Highway. Megapolis is truly, the address for the future.

Image for representation only.

The upcoming metro station at Megapolis Circle is at your doorstep.



MEGAPOLIS TOWNSHIP AERIAL VIEW

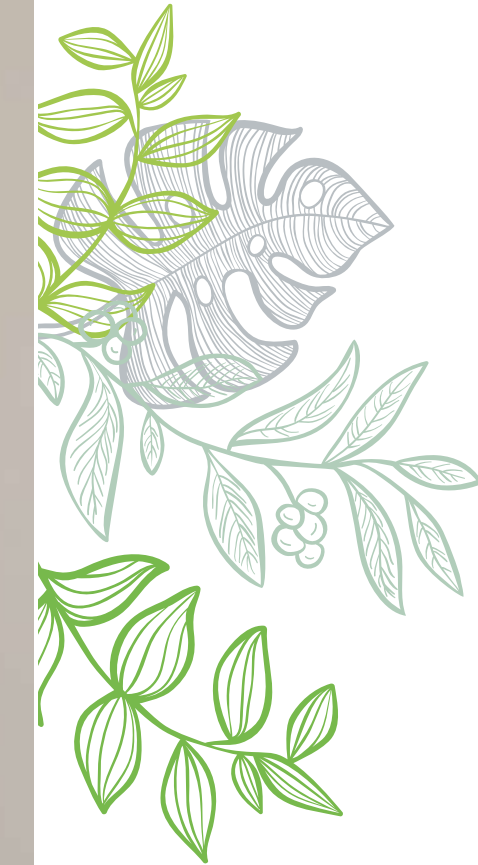


PROJECT LAYOUT





Image for representation only.

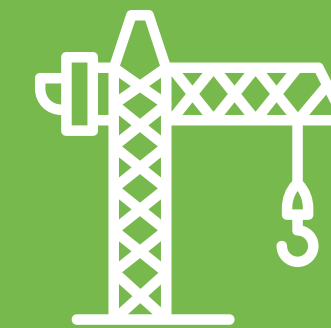


LOCATION

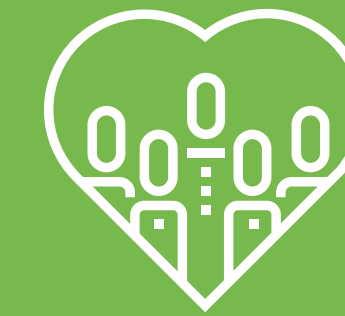


**AN ENDURING
LEGACY OF TRUST.**

Megapolis is a joint venture between Kumar Properties and ABIL, and carries the stamp of trust, and design excellence that both the firms are renowned for. Megapolis has already delivered 80 towers and over 5000 apartments. It has to its credit over 70,00,000 sq ft of completed construction and 20,000 happy residents to show for it.



70,00,000+
Sq.ft. construction



20,000+
Residents



5,000+
Apartments



80
Towers



DEVELOPERS

Pegasus Properties Pvt. Ltd.

LANDSCAPE DESIGN

Element Design Studio Pvt. Ltd. (Gregory Kunak, Singapore)
Shobha Bhopatkar & Associates

ARCHITECTS

RSP Architects, Planners & Engineers India Pvt. Ltd.

RCC CONSULTANTS

JW Consultants LLP