



**Site:** Survey No. 52, Near Brick College, Jagdamba Bhavan Marg, Undri, Pune - 411060.

**Call:** 9595 800 100

**Office:** 2D & E, B-Wing, Gulmohar Apartment, East Street Road, Above SBI, Pune - 411 001.  
Mob.: +91 9595 981 298

[www.karmarealty.in](http://www.karmarealty.in)

#### CREDITS

##### Architect

Jay Aeram Architect

##### RCC

G A Bhilare Consultants Pvt Ltd



MAHA-RERA REG. NO.: P52100024825

<https://maharera.mahaonline.gov.in/>

**Childhood-  
friendly  
Homes**



**“Do good things and good things will come your way.”**

Incepted with the belief that good deeds always deliver good results, Karma Realty believes in the power of goodness.

Here, we construct more than homes. We construct dreams. We don't just build properties. We build relationships. It is this commitment towards our customers that sets us apart and helps us build a strong foundation for your happiness. Enjoy the difference of residing in a Karma property, where life is uncompromised and uninterrupted. Upgrade your lifestyles to a distinctively refined taste with Karma Realty.

# Replay Life's Best Moments

There's nothing more beautiful than a child's smile. And nothing more precious than childhood memories. That's why we bring you a home that's dedicated to brightening your little ones' smiles and preserving their playful memories. Here, life is full of reasons to rejoice. Right from the sunrise and chirping birds, to the evening playtime and beautiful twinkling stars, every moment brings happiness, joy, and togetherness.



**After all,  
your children  
deserve the  
very best!**

“

Childhood is the  
most beautiful of all  
life's seasons.

”

# Recharge with Your Loved Ones

Escape the city chaos and step inside a world that's ruled by fun and family. Here, inner peace takes the centre stage as you prepare your little ones to conquer the world. Leave your hectic schedules and busy lifestyles behind and enter a happy place that's composed with utmost care and attention for your family. Rediscover the true meaning of childhood in a setting that's as playful, joyful, and inviting as paradise itself. Rediscover life at Karma Rejoice – 1 & 2 BHK Happy Homes in Undri.

“  
Children are  
one-third  
of our  
population  
and all of our  
future.

”



“

The greatest gifts  
you can give your  
children are the  
roots of  
responsibility  
and the wings  
of independence.

”



“

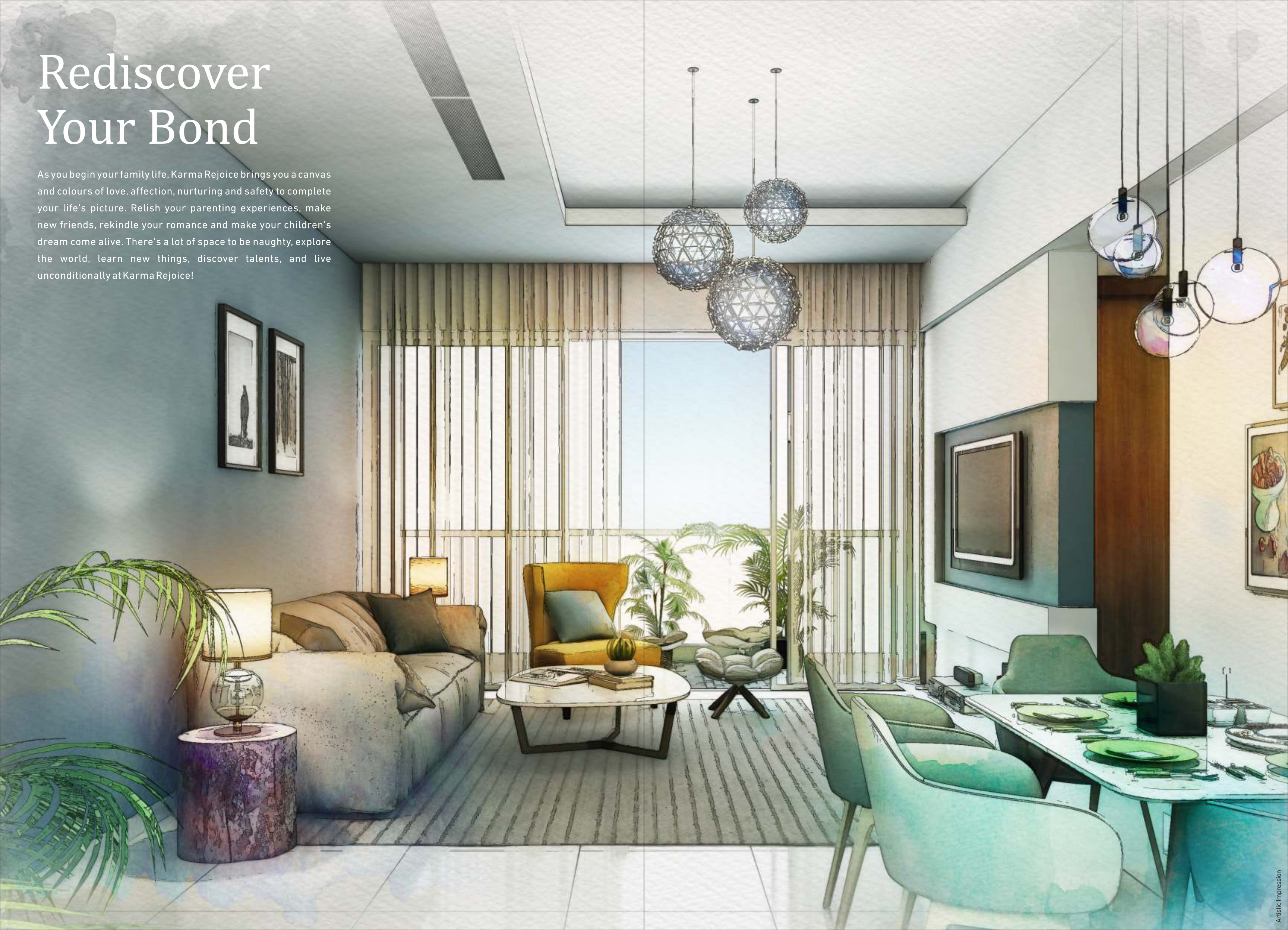
It all begins  
when stars  
align.

”



# Rediscover Your Bond

As you begin your family life, Karma Rejoice brings you a canvas and colours of love, affection, nurturing and safety to complete your life's picture. Relish your parenting experiences, make new friends, rekindle your romance and make your children's dream come alive. There's a lot of space to be naughty, explore the world, learn new things, discover talents, and live unconditionally at Karma Rejoice!



“

Play is the  
royal road to  
childhood  
happiness and  
adult  
brilliance.

”





# Rejuvenate Together

While the interiors of your home are absolutely stunning and soothing, the exteriors are built for unwinding with little ones. We've carefully thought-out various amenities for children and adults, too, so that all your family members enjoy a delightful time at home. Whether it's the play areas for your little ones, the splash pool and X-box for teenagers, extra-curricular activities for family game nights, or the various green elements for a naturally blissful time, we've left no stone unturned to deliver a fulfilling experience for one and all.





“  
Childhood  
is the most  
beautiful  
of all life's  
seasons.  
”



1 ENTRANCE GATE

2 CLUBHOUSE

“  
Children  
make  
you want  
to start  
life over.  
”

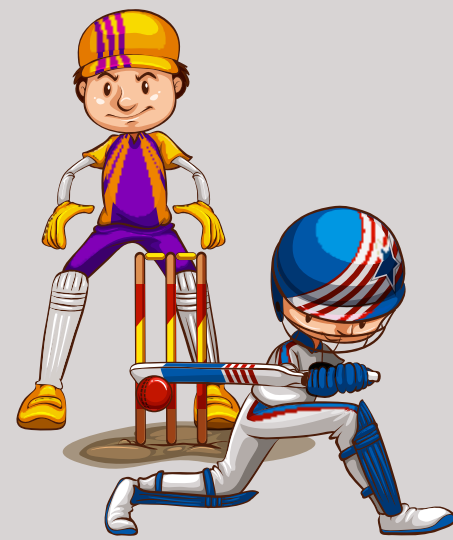
# Re-Play



PLAY AREA



MULTIPURPOSE  
COURT



CRICKET PITCH



CARDIO ROOM



SCULPTURE WALL



SPLASH POOL

# Re-Charge



GAZEBO



AMPHITHEATRE



POOL DECK  
WITH SITOUT



PARTY LAWN

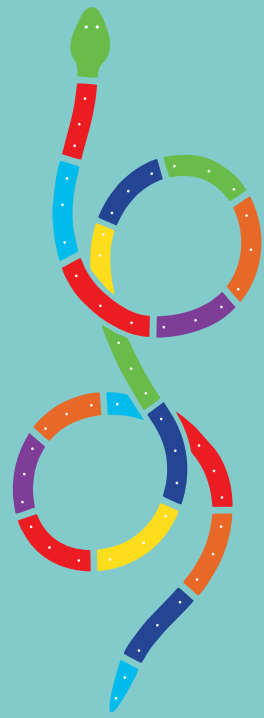


ELEGANT  
WATER BODY



SCHOOL BUS/CAB  
WAITING AREA

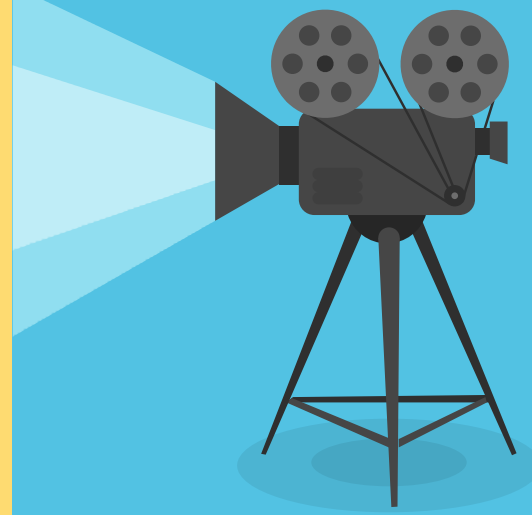
# Re-Store



SENSORY PATH



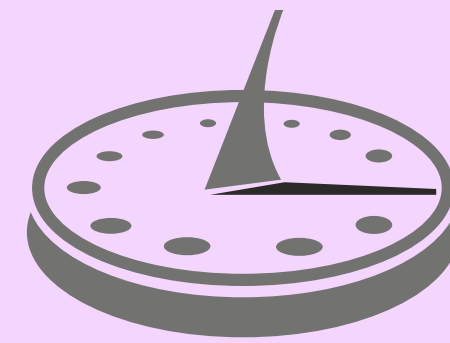
URBAN YOGA/  
MEDITATION AREA



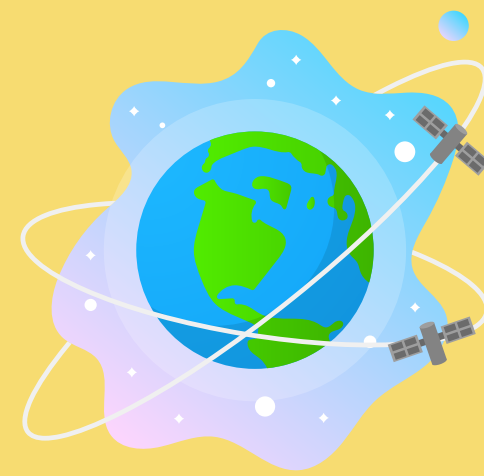
SKYPLEX



STORY TELLING  
WALL

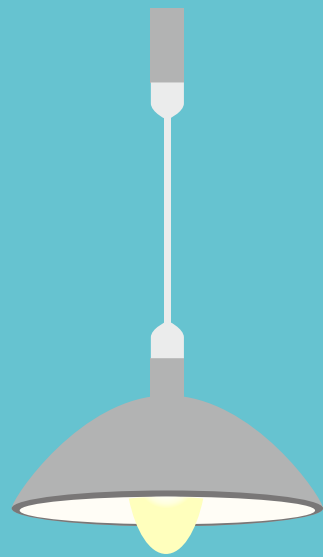


SUNDIAL

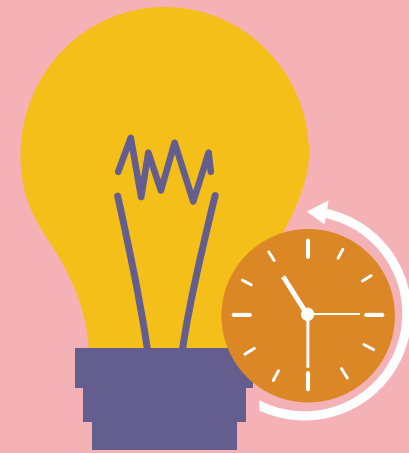


EARTH GLOBE

# Re-Nurture



ENERGY  
OPTIMIZATION BY USE  
OF LED LIGHTS  
FOR COMMON AREAS



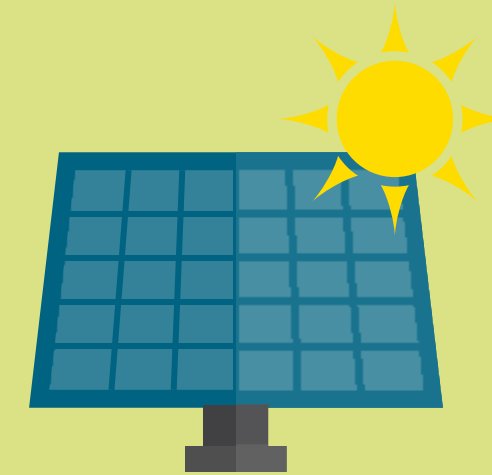
ENERGY SAVING BY  
AUTO TIMERS  
FOR STREET LIGHTS  
TO REDUCE  
POWER CONSUMPTION



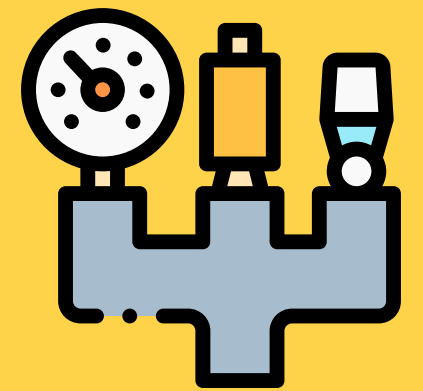
RAIN WATER  
HARVESTING



SEWAGE TREATMENT  
PLANT  
WATER REUSED FOR  
FLUSHING &  
GARDENING (STP)



USE OF SOLAR  
ENERGY



WATER SAVING  
PLUMBING  
FEATURE

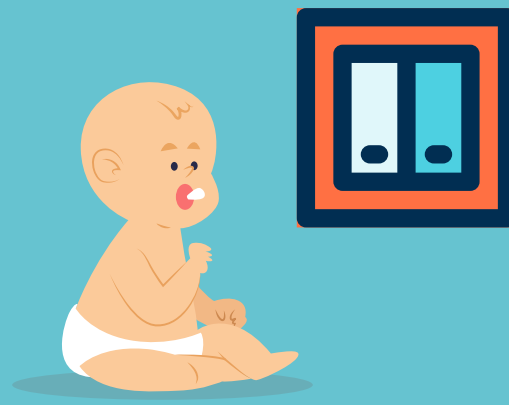
# Re-Generate



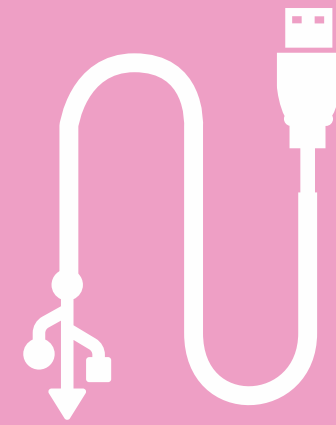
ALL HOME  
ENTRANCES ARE  
VASTU-COMPLIANT



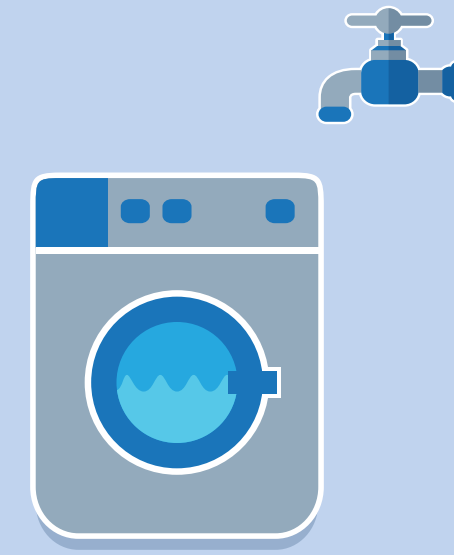
TERRACE ATTACHED  
TO EVERY  
LIVING ROOM



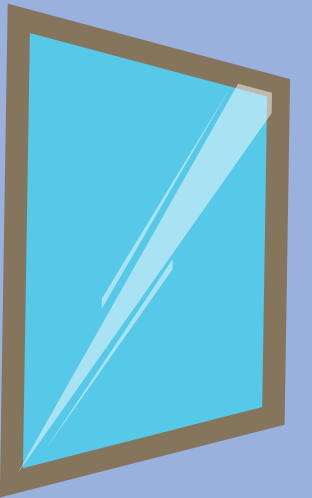
CHILD SAFETY  
SOCKETS



USB POINT IN  
LIVING AND  
MASTER BEDROOM



SEPARATE TAP FOR  
WASHING MACHINE  
IN DRY AREA



FULL GLASS VIEW  
FOR NATURAL LIGHT  
AND VENTILATION



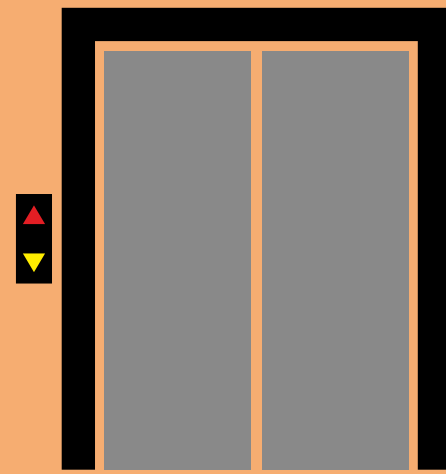
# Re-Vive



WI-FI ENABLED  
HOMES



COMMON DTH



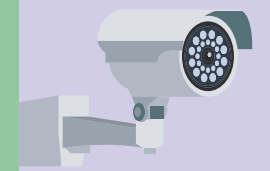
MRL ELEVATORS  
WITH ARD



DESIGNER  
ENTRANCE GATE



LIGHTNING  
ARRESTER



2-TIER SAFETY  
AND  
SECURITY SYSTEM

# Specifications

## STRUCTURE

RCC FRAMEWORK

## WALL

FLYASH BLOCK/BRICK FOR INTERNAL & EXTERNAL

INTERNAL:- POP/GYPSUM FINISH FOR WALLS AND CEILINGS

EXTERNAL:- SAND FACED DOUBLE COAT PLASTER

## ELECTRICAL

PROVISION FOR TV, DTH, USB PORT, TELEPHONE CONNECTION IN LIVING & MASTER BEDROOM

PROVISION FOR GEYSER IN BATHROOM

PROVISION FOR POWER POINT FOR REFRIGERATOR, MICROWAVE, MIXER IN KITCHEN

POLYCAB WIRING OR EQUIVALENT

LEGRAND SWITCHES OR EQUIVALENT

## DOOR & WINDOW

LAMINATED DOOR WITH FRAME

3 TRACK ALUMINIUM WINDOW WITH MOSQUITO NET EXCEPT KITCHEN

FULL SIZE SLIDING DOOR IN LIVING

M.S. GRILL & RAILING

## PLUMBING

C.P. FITTINGS/SANITARY OF CERA OR EQUIVALENT

PROVISION FOR WATER PURIFIER IN KITCHEN

PROVISION FOR SEPARATE WATER TAP FOR WASHING MACHINE AND UTILITY AREA IN DRY AREA

## PAINT

OIL BOUND DISTEMPER FOR INTERNAL WALL

ANTI ALGAE EMULSION FOR EXTERNAL WALL

SYNTHETIC ENAMEL FOR GRILL & RAILING

## FLOORING & WALL TILE

LIVING/BEDROOM/DINNING/KITCHEN - VETRIFIED FLOORING

GRANITE KITCHEN PLATFORM WITH S.S. SINK

WALL TILES OF KITCHEN AND BATHROOM GLAZED CERAMIC TILE

ANTISKID TILES IN BATHROOM, BALCONY/TERRACE AND DRY AREA

“

There is always  
one moment in  
childhood when  
the door opens  
and lets the  
future in.

”

# 1 BHK

ISOMETRIC VIEW



- A ENTRANCE
- B LIVING ROOM
- C TERRACE
- D KITCHEN
- E BEDROOM
- F WC
- G BATHROOM
- H DRY BALCONY

# 2 BHK

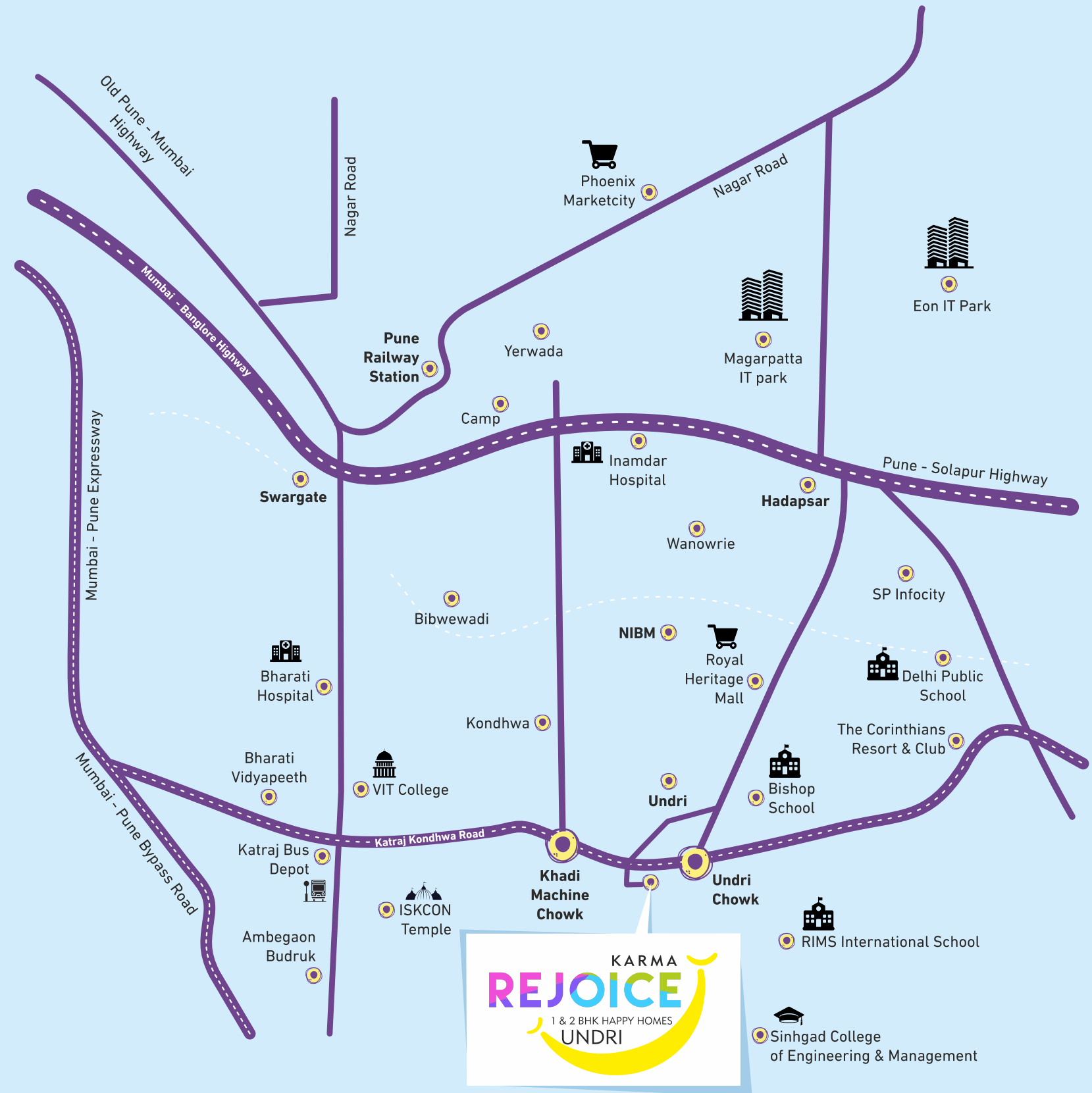
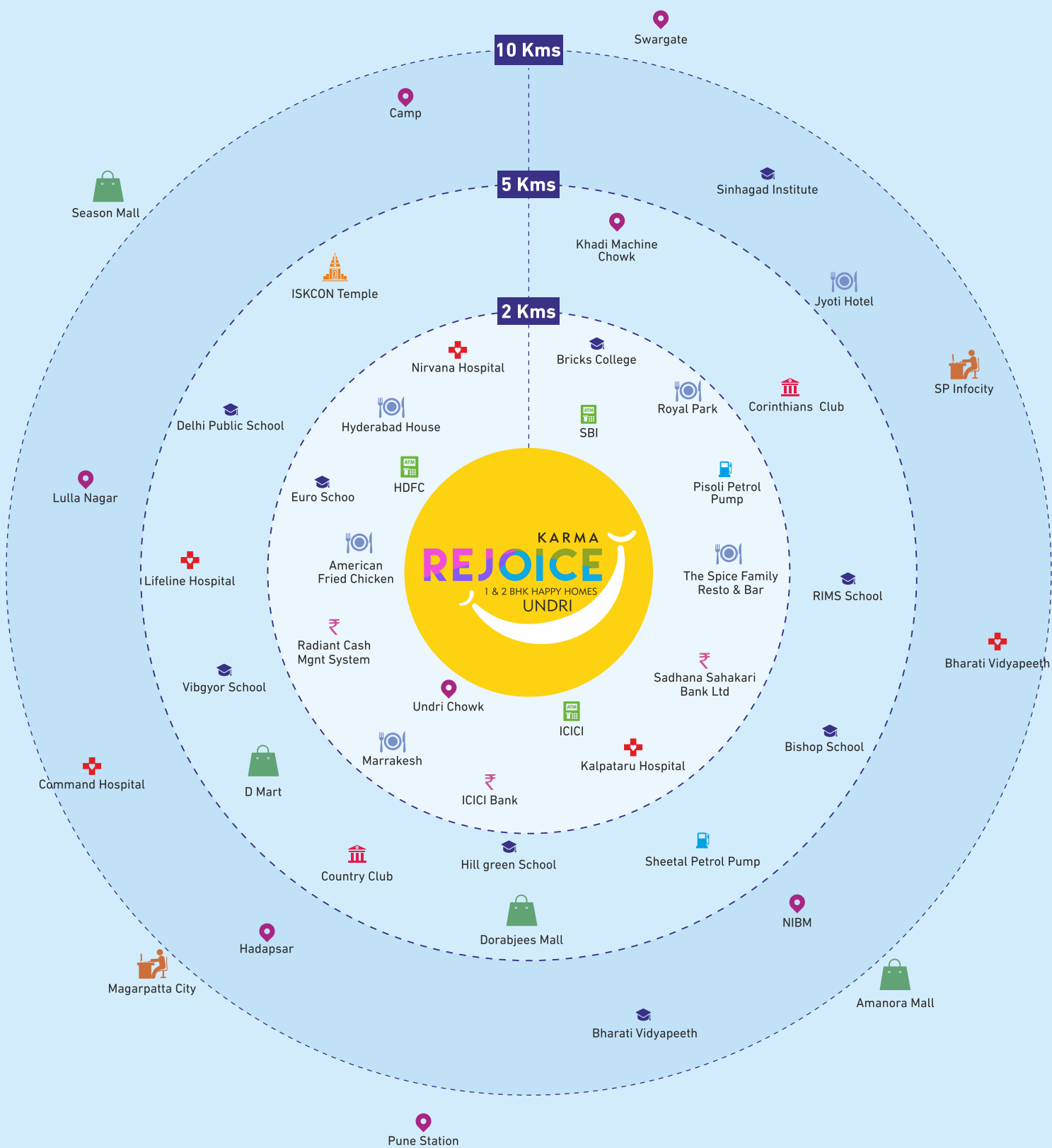
ISOMETRIC VIEW



- A ENTRANCE
- B LIVING ROOM
- C TERRACE
- D KITCHEN
- E BEDROOM
- F BATHROOM
- G DRY BALCONY
- H MASTER BEDROOM

# Recapture Time

Undri is one of the most rapidly developing locations in the city that's equally close to your daily needs as well as your longing to live amidst nature. With state-of-the-art schools and colleges in close proximity, education for your little stars will never be a hassle. Some of the top national and international schools are now in Undri, making this the perfect address to build the future of your talented superstars. Traveling to work will also be a breeze due to the swiftly connecting roads and public transport. And while you're always nearby your priorities, you still get an opportunity to disconnect from the city life in the lap of nature. Celebrate more time to be yourself, to thoroughly enjoy your kids' childhood, and to look forward to a rewarding life. Invest in your happiness, children's education, and a prosperous future at Karma Rejoice.



“ Children re-invent your world for you. ”